

# MONTHLY MEMBERSHIP PROGRESS REPORT

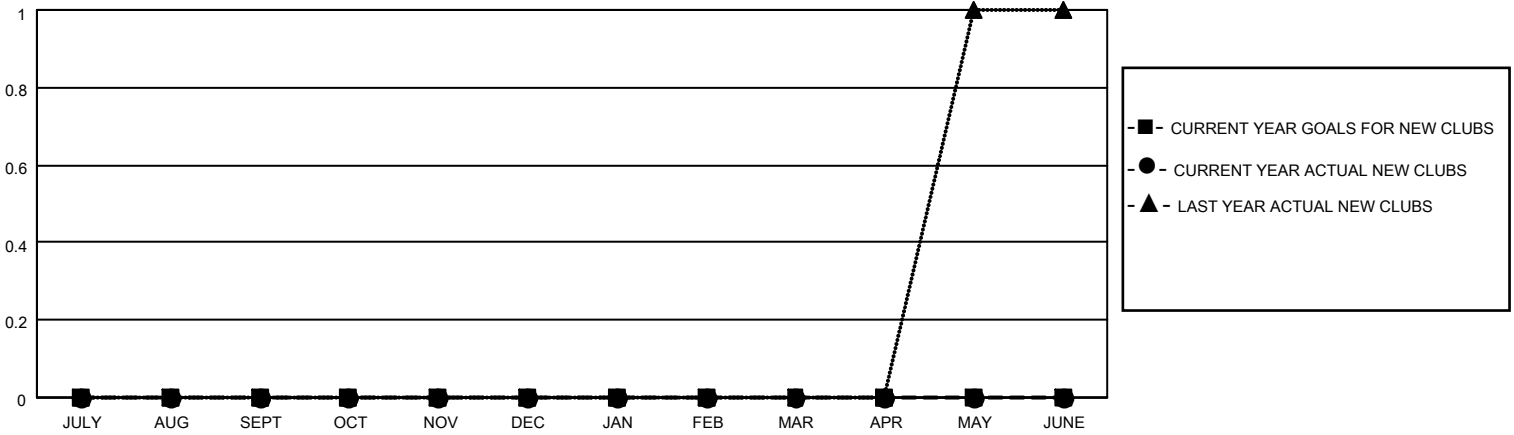
LOCATION ONTARIO

District A 4

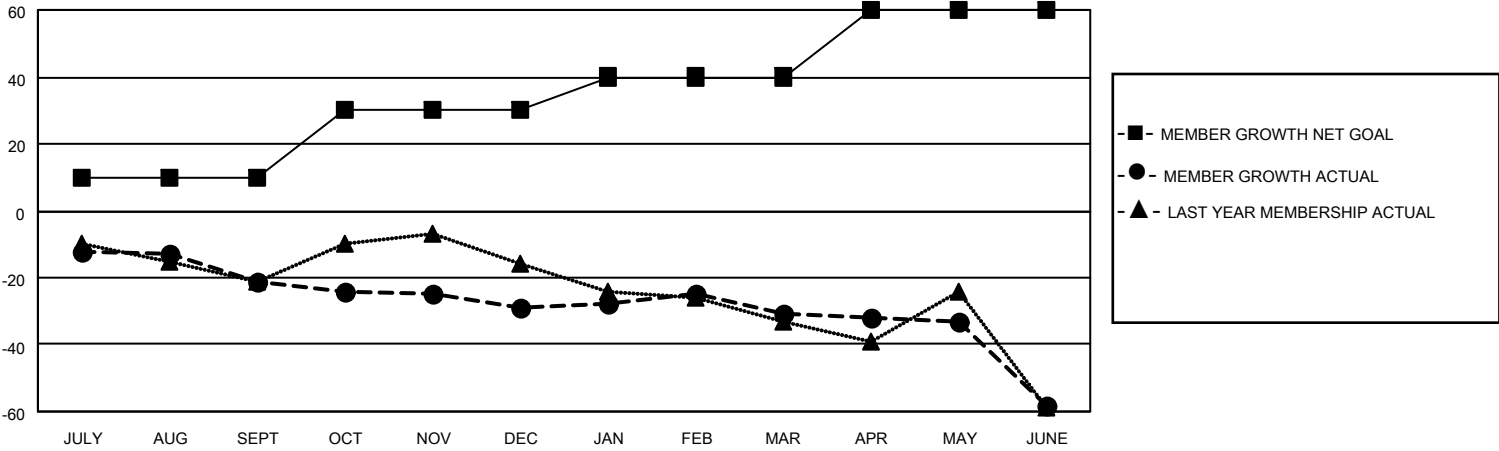
Results as of: 6/30/2022

Clubs				Members			
RESULTS FOR 2021-2022				RESULTS FOR 2021-2022			
QUARTER	NEW CLUB GOAL	NEW CLUBS	DROPPED CLUBS	QUARTER	MEMBER GROWTH NET GOAL	MEMBER GROWTH ACTUAL	DROPPED MEMBERS ACTUAL (including transfers)
JULY/AUG/SEPT	0	0	0	JULY/AUG/SEPT	10	14	28
OCT/NOV/DEC	0	0	0	OCT/NOV/DEC	20	39	41
JAN/FEB/MAR	0	0	0	JAN/FEB/MAR	10	30	27
APR/MAY/JUNE	0	0	0	APR/MAY/JUNE	20	54	77

**GOALS AND ACTUAL NEW CLUBS CUMULATIVE**



**GOALS AND ACTUAL MEMBERS CUMULATIVE**



**DROPPED CLUBS: 0**

**38 CLUBS OF 62 ADDED 1 OR MORE NEW MEMBERS**

**GENDER DISTRIBUTION**

MALE	916 (71.62%)
FEMALE	363 (28.38%)
NON BINARY	0 (0.00%)
PREFER NOT TO ANSWER	0 (0.00%)

**DROPPED MEMBERS**

DECEASED	31
CLUB CANCELLED	0
OTHER	142
<b>TOTAL</b>	<b>173</b>

[CLICK HERE FOR CUMULATIVE MEMBERSHIP DATA](#)

TOTAL FAMILY UNIT MEMBERS	158
FAMILY MEMBERS PAYING HALF DUES	81